



Instructions by Monster Shop (UK)

## 80L Industrial Vacuum

This guide provides step-by-step instructions for assembling, operating, and maintaining your MAXBLAST Industrial Wet & Dry Vacuum. It covers setup, attachment use, and cleaning procedures to ensure safe and efficient performance across all models.

## Product Information

### 80L Industrial Vacuum

## Description

Keep that warehouse not only organised, but now clean with the Maxblast 80 Litre Industrial Vacuum. It is perfectly suited towards any industrial environment, but can adapt to any location - as long as there's a power outlet for the plug socket!

The highly powerful 3000 Watt motor can vacuum both wet and dry substances with one of its four hose attachments. Choose from the two floor brushes, the bristle and crevice nozzle attachment.

Effortless to empty and fill the stainless steel drum, combined with the 80 Litre tank capacity and easy to manoeuvre castor wheels means you really can clean every nook and cranny.

## Product specifications

Dimensions	58.5 (L) x 57.3 (W) x 99cm (H)
Weight	28 kg
Power	3000W
Voltage	230V / 50Hz
Amperage	10A
Air Flow	106 L/S
Noise Level	80dB
Filter	Cloth Filter
Drum Capacity	80L



Instructions by Monster Shop (UK)

80L Industrial Vacuum

SKU

10678

## Safe Working Practice

- Do not use this product for anything other than its intended purposes.
- Ensure you have read and fully understood the instruction manual and safety advice before using this product.
- Do not use the machine if the power cord is frayed or damaged.
- When the device is not in use ensure that the power plug is removed from the socket. This will prevent damage to the appliance through power surges.
- This appliance can be dangerous if the power cord or wires come into contact with water.
- Clean this product after use and unplug the appliance from the wall whilst cleaning.
- Do not overwork the machine.
- If damaged, do not operate the machine.
- Do not pour water on the electrical housing or near the vents.
- Appropriate clothing must be worn whilst operating this machine.
- Keep clean to prolong the life.
- Do not jam the air inlet mouth.
- Do not operate near combustible and explosive areas/items.
- Do not vacuum combustible, explosive or sharp items.
- Do not turn the machine upside down.
- When repairing, remove plug from power supply.
- Keep away from bright sunlight and high temperatures.
- To clean, do not pour water on it. Wipe down and dry with a cloth.
- Check the filter before each use.

## Wet Vacuuming

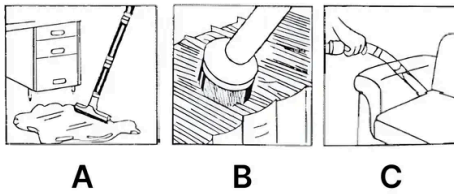
- Empty the water regularly.
- Avoid any collision with the vacuum that could knock it over. If this happens, the float will be suctioned to the top of the vacuum due to pressure, and it will not release. This could cause the float to melt and the motor to overheat. In the event that this happens, to stop the process please turn the vacuum off and empty the water. Once the float reaches the bottom you can continue vacuuming.
- If you experience loss of suction, or if there is a change in motor noise, turn off your vacuum and empty the water. These signs could mean that the float is near the top.
- When using the vacuum cleaner for water, remember to remove the cloth filter.

## Dry Vacuuming



Instructions by Monster Shop (UK)

80L Industrial Vacuum



Check the filter is in good condition before using the vacuum. If there is dust appearing in the motor head, the filter may be broken or incorrectly installed.

- **A** - Wet Floor Nozzle: For carpet and hard flooring.
- **B** - Bristle: For windows and tables.
- **C** - Crevice Nozzle: For tight corners and crevices.

## Tools

Screwdriver	1
-------------	---



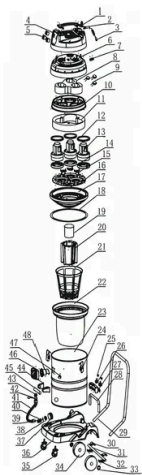
---

## Materials



1	Handle	1 piece(s)
2	Coating	1 piece(s)
3	Power Cable	1 piece(s)
4	Top Cover	1 piece(s)
5	Switch	1 piece(s)
6	Middle Cover	1 piece(s)
7	Pad	1 piece(s)
8	Sponge	1 piece(s)
9	Capacitor	1 piece(s)
10	Middle Cover Gasket	1 piece(s)
11	Air Outlet Sponge	1 piece(s)
12	Upper Gasket	1 piece(s)
13	Motor	1 piece(s)
14	Lower Gasket	1 piece(s)





15	Air Inlet Blocking Board	1 piece(s)
16	Motor Pedestal	1 piece(s)
17	Drum Cover	1 piece(s)
18	Wind Tight Ring	1 piece(s)
19	Protective Valve	1 piece(s)
20	Pedestal Basket	1 piece(s)
21	Support Basket	1 piece(s)
22	Filter	1 piece(s)
23	Drum	1 piece(s)



24	Drum Lock	1 piece(s)
25	Locking Block	1 piece(s)
26	Turnover Part	1 piece(s)
27	Turnover Shelf	1 piece(s)
28	Turnover Support Shelf	1 piece(s)
29	Base Big Handrail	1 piece(s)
30	Axle Press-Cover	1 piece(s)
31	Axle	1 piece(s)
32	Axle Press-Bottom	1 piece(s)
33	Cork	1 piece(s)
34	Rubber Wheel	1 piece(s)
35	Wheel	1 piece(s)
36	Pedestal	1 piece(s)
37	Tight Gasket	1 piece(s)



38	Water Outlet	1 piece(s)
39	Rubber Gasket	1 piece(s)
40	Water Outlet Screw	1 piece(s)
41	Water Outlet Hose	1 piece(s)
42	Connector Ring	1 piece(s)
43	Water Outlet Coating	1 piece(s)
44	Handle Pedestal	1 piece(s)
45	Stainless Steel Tube	1 piece(s)
46	Suction Pedestal	1 piece(s)
47	Ring	1 piece(s)
48	Suction Valve	1 piece(s)





## Steps (9)

### 1. Product Features



**A.** Vacuum Attachment

**B.** Pedestal

**C.** Stainless Steel Drum

**D.** Vacuum Hose

**E.** Handle

**F.** Power Switch

**G.** Drain Hose

**H.** Wheel



## 2. Assembling the Wheels

- Start by assembling the wheels on the vacuum. Push the two front castor wheels into the corresponding pedestal holes.
- Push the wheels firmly into place to ensure they are attached properly.
- Line up the rear wheels with the mounting holes and cover with the pressure plates.
- Screw the pressure plates into place to secure the rear wheels.



### 3. Connecting the Hose

Insert the hose connector into the air inlet mouth. Make sure the connector is securely fastened.

### 4. Filter and Drum Setup

- Check the dual filter is in place for dry vacuuming. If you are wet vacuuming, remove everything from the drum.
- Place the power cord right at the back of the drum when in use.
- If you wish, before dry vacuuming, you can add the dust bag.

### 5. Attaching the Vacuum Nozzle

Attach the desired vacuum nozzle.

### 6. Powering On the Vacuum

- Ensure the vacuum is plugged into a power supply.
- Switch on at mains, and press the 'On' button to power up.

### 7. Drum Cleaning

- Switch off the vacuum at the power supply.
- Unfasten the locking knob and lift off the top cover.
- Remove the filter bag and clean the dust from the drum.
- Replace the clean filter bag and lock the top cover back into place.



## 8. Dual Filter Cleaning



- Wash the Cloth Filter with warm water and use a soft cloth if needed.
- Remove the filter before cleaning and allow it to dry before re-installing.

**Note:** Do not wash the Dust Bag, only the Cloth Filter.

## 9. Resolution Guide

### • WHAT DO I DO IF THERE ARE MISSING PARTS FROM MY ORDER?

If there appears to be any part missing from your order, contact our friendly and helpful Customer Support Team within 7 days of receipt.

### • THE VACUUM HAS LOST SUCTION

Ensure the vacuum is empty, the filter is clean and there are no blockages in the hose/ attachment.

### • MY INDUSTRIAL VACCUM WILL NOT START

Check the plug is attached to a power supply and the drum is empty. Check the fuse in the plug. When checking the fuse, ensure the vacuum is switched off at the mains. If it still will not start, simply call or email our Support Team. They will guide you through issues or arrange a date and time for us to collect the product and fix it with our 12 month guarantee.

### • MY HOSE ATTACHMENT ISN'T WORKING PROPERLY

Check the vacuum filter as this can become blocked and need cleaning. The hose itself can also become obstructed by objects stuck in the pipe, so please check the hose for any blockages.

**FOR ALL OTHER ISSUES, PLEASE CONTACT OUR CUSTOMER SUPPORT TEAM.**



**Instructions by Monster Shop (UK)**

80L Industrial Vacuum