



Instructions by Monster Shop (UK)
Composite Fencing Gates with LED Posts
214902-214903

Product Information
Composite Fencing Gates with LED Posts

Description

Our composite garden gates combine robust construction with modern convenience, crafted from durable, low-maintenance composite materials that resist weathering and wear. Each gate includes a secure locking system for added safety and peace of mind. Designed to provide a stylish and reliable entryway, these gates feature a contemporary finish that complements any outdoor setting -making them an ideal choice for both security and curb appeal.

Product specifications

	214902	214903
Dimensions	900*1800mm	900*1800mm
Colour	Grey	Brown

SKU
214902-214903

Safety Advice

- Please read through the Safe Working Practice to ensure prevention of injury or damage to the device.**
- Ensure you have read and fully understood the instruction manual and safety advice before using this product.
 - Only install the gate on stable, level ground to ensure structural integrity and prevent misalignment or operational issues.
 - Ensure all gate posts are securely anchored according to the manufacturer’s recommendations to maintain stability and prevent sagging or improper operation.



- The gate must be correctly aligned and level to ensure smooth opening and closing without obstruction or excessive force.
- Ensure all hinges, latches, and locking mechanisms are properly installed and tightened to prevent movement, misalignment, or security risks.
- Regularly inspect the gate for signs of wear, rust (if applicable), or damage to any components, including hinges, fasteners, and locking mechanisms.
- Lubricate moving parts periodically, to prevent stiffness, squeaking, or mechanical failure.
- Do not force the gate open or closed if resistance is felt, as this may indicate an obstruction or misalignment that needs addressing.
- Do not allow children to play on or climb the gate, as this could lead to injury or damage to the structure.
- Avoid placing the gate near high-heat sources, open flames, or combustible materials to reduce fire risks.
- Do not apply excessive weight or force to the gate, as this may cause misalignment or damage to the hinges and support structure.
- Ensure the gate's locking mechanism is engaged when necessary to prevent accidental movement or unauthorised access.
- If the gate becomes difficult to operate, inspect all moving parts and fasteners for signs of wear or damage and perform necessary adjustments or replacements.
- In high-wind areas, ensure the gate is secured properly when not in use to prevent sudden movement or damage.
- If unsure about any aspect of installation or maintenance, consult a qualified professional to prevent safety risks



Parts

Part 1 - Side Beam 1 piece(s) 

Part 2 - Top Gate Slat 1 piece(s) 

Part 3 - Side Beam 1 piece(s) 


Part 4 - Gate Slat 8 piece(s) 

Part 5 - Top Beam 1 piece(s) 

Part 6 - Bottom Beam 1 piece(s) 

Part 7 - Top Hinge 1 piece(s) 

Part 8 - Bottom Hinge 1 piece(s) 

Part 9 - Corner Connectors 4 piece(s) 

Part 10 - Gate Securing Fittings 2 piece(s) 


9. 

Part A - 20mm Screw 16 piece(s) 

Part B - 45mm Screw 12 piece(s) 


Part C - 50mm Screw 12 piece(s) 

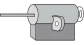
Part D - Allen Key 1 piece(s) 

Lock Part 1 - Handle Mechanism 1 piece(s) 

Lock Part 2 - Latch Connecting Bar 1 piece(s) 

Lock Part 3 - Lock Handle Front Panel 1 piece(s) 

Lock Part 4 - Lock Handle Back Panel 1 piece(s) 

Lock Part 5 - Key Mechanism 1 piece(s) 



Lock Part 5-1 - Key Mechanism
Screws

2 piece(s)



Lock Part 6 - Latch Fitting

1 piece(s)



Lock Part A - Connecting Rod

2 piece(s)



Lock Part B - Fitting Screws

2 piece(s)



Lock Part C - Latch Securing
Screws

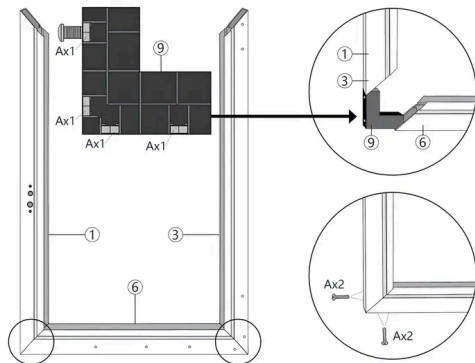
4 piece(s)



Steps (12)

1. Gate Frame Assembly: Beam Alignment & Connection

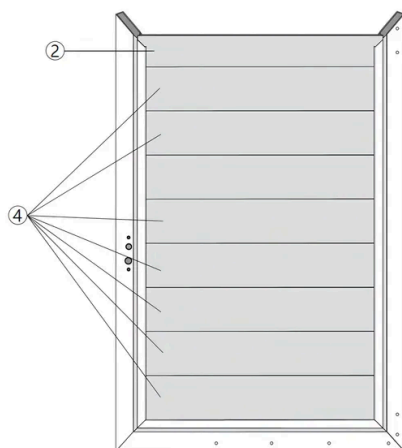
To assemble the gate frame, follow these steps:



1. Position the **Side Beam** (Part 1) and **Side Beam** (Part 3) vertically.
2. Attach the **Bottom Beam** (Part 6) horizontally between the two side beams.
3. Use the **Corner Connectors** (Part 9) to secure the corners where the side beams meet the bottom beam.
4. Insert the **20mm Screws** (Part A) into the designated holes on the corner connectors to secure the beams together.

Ensure all parts are aligned properly and securely fastened.

2. Gate Frame Assembly: Slat Installation



To continue assembling the gate frame, follow these steps:

1. Insert the **Gate Slats** (Part 4) vertically between the side beams, ensuring they are evenly spaced and aligned.
2. Position the **Top Gate Slat** (Part 2) horizontally at the top of the frame.

Ensure all components are properly aligned and securely fastened to maintain the structural integrity of the gate.

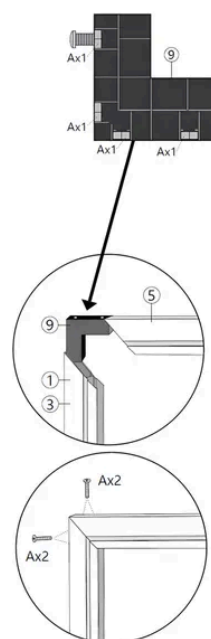
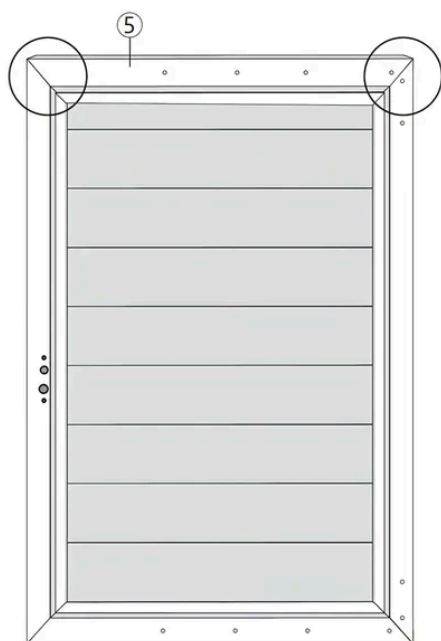


3. Gate Frame Assembly Alignment

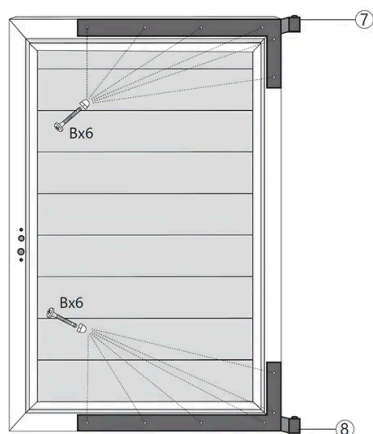
To complete the gate frame assembly, follow these steps:

1. Position the **Top Beam** (Part 5) horizontally at the top of the frame.
2. Use the **Corner Connectors** (Part 9) to secure the corners where the top beam meets the side beams (Parts 1 and 3).
3. Insert the **20mm Screws** (Part A) into the designated holes on the corner connectors to secure the beams together.

Ensure all parts are aligned properly and securely fastened to maintain the structural integrity of the gate.



4. Gate Hinge Installation



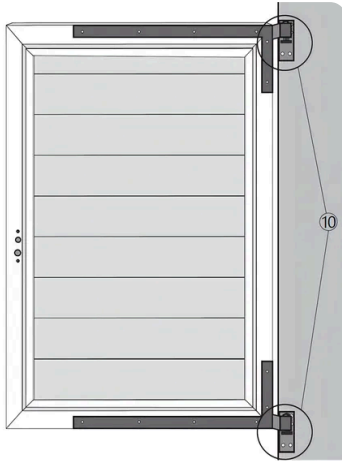
To install the hinges on the gate, follow these steps:

1. Position the **Top Hinge** (Part 7) at the top corner of the gate frame.
2. Secure the top hinge using **45mm Screws** (Part B), ensuring it is firmly attached.
3. Position the **Bottom Hinge** (Part 8) at the bottom corner of the gate frame.
4. Secure the bottom hinge using **45mm Screws** (Part B), ensuring it is firmly attached.

Ensure both hinges are aligned properly to allow smooth operation of the gate.



5. Gate Fittings Installation and Alignment



To install the gate securing fittings, follow these steps:

1. Position the **Gate Securing Fittings** (Part 10) at the top and bottom corners of the gate frame and secure to the LED Aluminium Posts.
2. Ensure the fittings are aligned with the hinges for proper operation.
3. Secure the fittings using the appropriate screws, ensuring they are firmly attached.

Ensure all components are properly aligned and securely fastened to maintain the structural integrity and functionality of the gate.

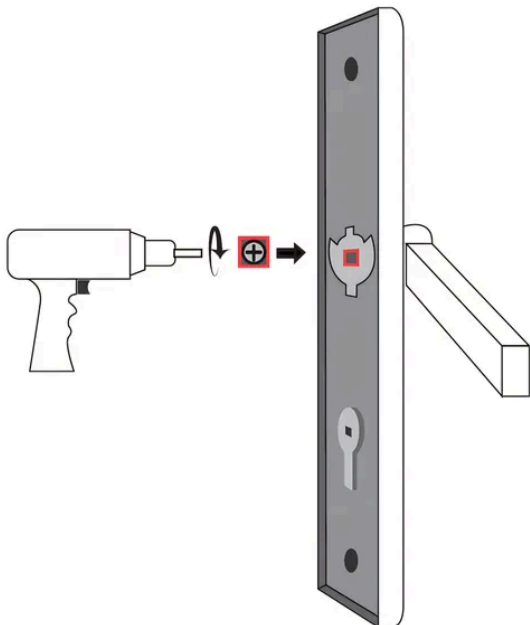
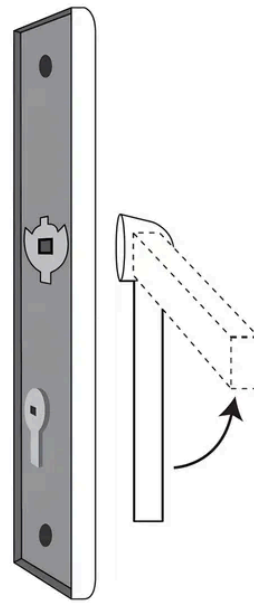
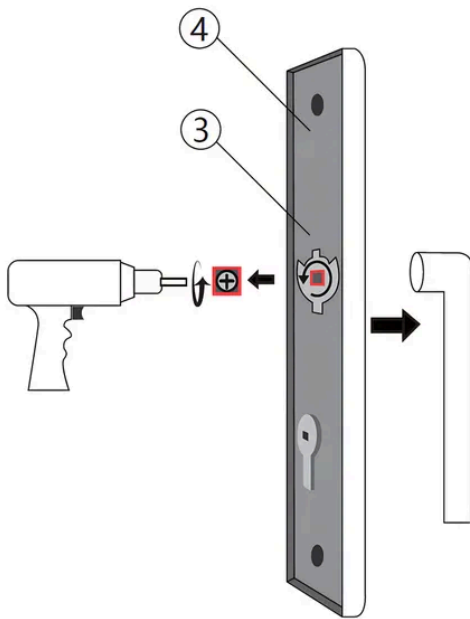


6. Gate Lock Handle Installation

To install the lock handle on the gate, follow these steps:

1. Secure the handles using the a drill, ensuring it is firmly attached to the panel it is being fixed to.

Ensure the lock handle is properly aligned for smooth operation.

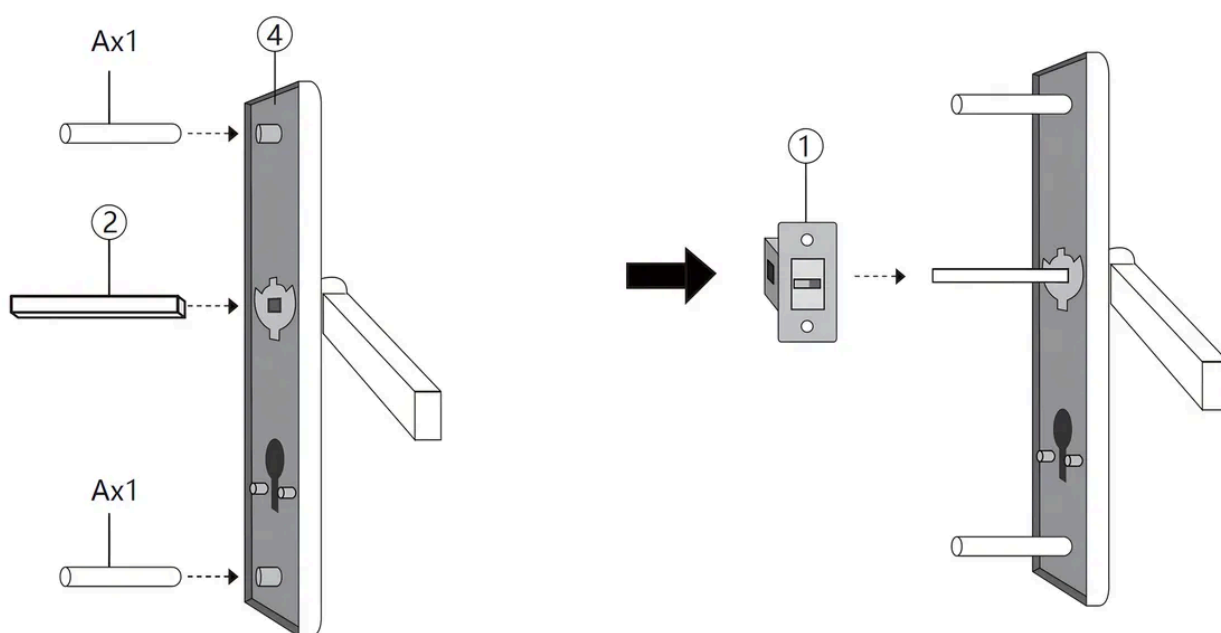


7. Lock Mechanism Assembly

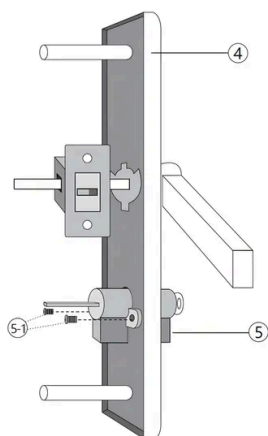
To install the lock mechanism on the gate, follow these steps:

1. Insert the **Connecting Rod** (Lock Part A) through the designated holes on the **Lock Handle Back Panel** (Lock Part 4).
2. Align and insert the **Latch Connecting Bar** (Lock Part 2) into the corresponding slot on the back handle.
3. Position the **Handle Mechanism** (Lock Part 1) onto the connecting rods and latch bar, ensuring proper alignment.

Ensure all components are securely connected and aligned for proper lock functionality.



8. "Key Mechanism Installation for Gate Lock"



To complete the lock mechanism installation on the gate, follow these steps:

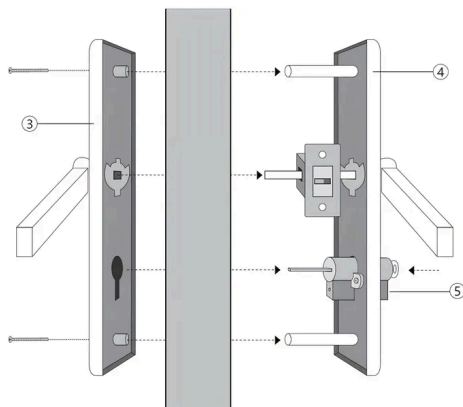
1. Position the **Key Mechanism** (Lock Part 5) into the designated slot on the **Lock Handle Back Panel** (Lock Part 4).
2. Secure the key mechanism using the **Key Mechanism Screws** (Lock Part 5-1), ensuring it is firmly attached.

Ensure all components are securely connected and aligned for proper lock functionality.



9. Lock Mechanism Assembly

To complete the lock mechanism installation on the gate, follow these steps:



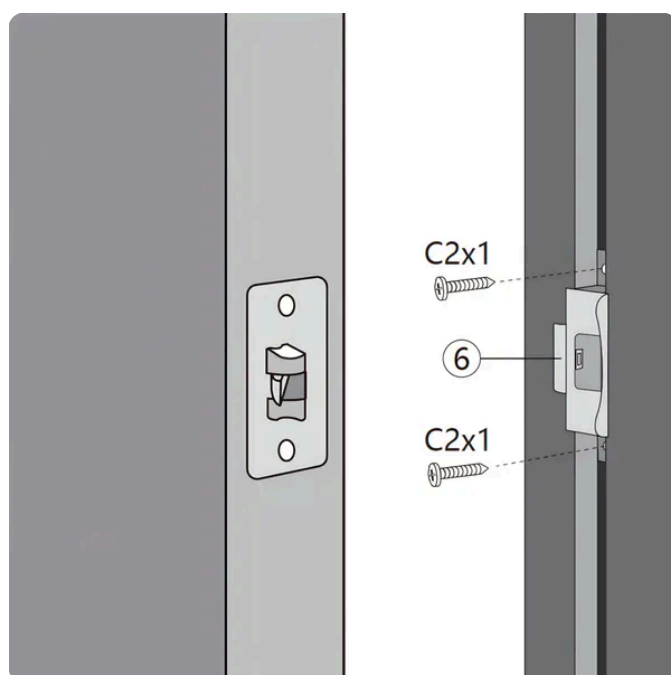
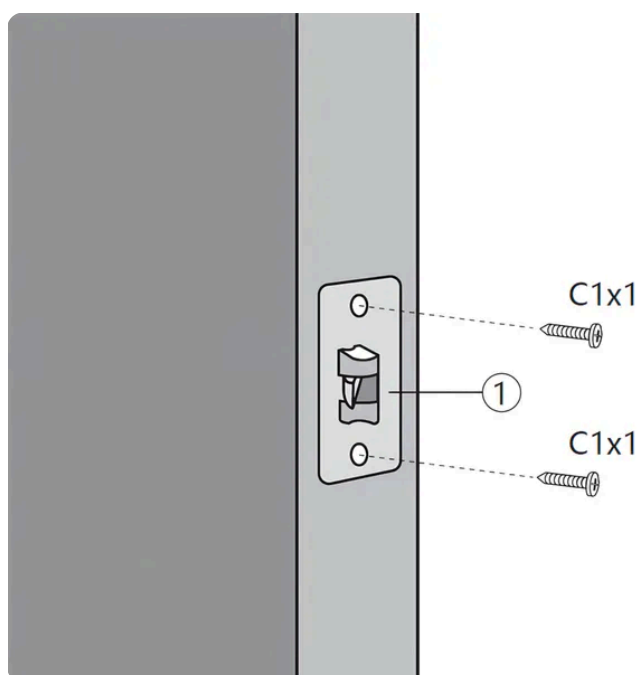
1. Position the **Lock Handle Front Panel** (Lock Part 3) on one side of the gate, aligning it with the designated holes.
2. Insert the **Connecting Rod** (Lock Part A) through the holes in the gate and into the **Lock Handle Back Panel** (Lock Part 4) on the opposite side.
3. Align the **Latch Connecting Bar** (Lock Part 2) with the slot in the back handle.
4. Secure the **Key Mechanism** (Lock Part 5) into the designated slot on the back handle using the **Key Mechanism Screws** (Lock Part 5-1).
5. Ensure all components are securely connected and aligned for proper lock functionality.

10. Latch Fitting Installation on Gate

To complete the installation of the latch fitting on the gate, follow these steps:

1. Position the **Latch** (Lock Part 1) on the gate frame, aligning it with the pre-drilled holes.
2. Position the **Latch Fitting** (Lock Part 6) on the Fence Post. Make sure to pre-drill holes to align latch fitting to correct height..
3. Secure the latch fitting using two **Latch Securing Screws** (Lock Part C), ensuring it is firmly attached.

Ensure all components are securely connected and aligned for proper lock functionality.



11. Maintenance

- **Light Cleaning:** Wipe down the gate surfaces occasionally with a damp cloth or rinse with water to keep them looking their best.
- **Hinge and Latch Checks:** Periodically check hinges and latches to ensure they are securely fastened and operate smoothly.
- **Lighting Maintenance:** Clean the solar panels on the LED lights regularly to maintain charging efficiency, especially during autumn when leaves can accumulate.
- **Avoid Impact Damage:** Take care not to slam or force the gate closed, especially in high winds, to preserve structural integrity.
- **Monitor Gate Alignment:** Ensure the gate remains properly aligned and adjust hardware if needed to maintain smooth operation.

12. Troubleshooting

- **WHAT DO I DO IF THERE ARE MISSING PARTS FROM MY ORDER?**

If there appears to be any part missing from your order, contact our friendly and helpful Customer Support Team within 7 days of receipt.

- **FOR ALL OTHER ISSUES, PLEASE CONTACT OUR CUSTOMER SUPPORT TEAM.**



Instructions by Monster Shop (UK)

Composite Fencing Gates with LED Posts