

Instructions by Monster Shop (UK)

KuKoo Commercial Fruit Juicer

215433



Product Information

KuKoo Commercial Fruit Juicer

Description

The KuKoo Commercial Fruit Juicer is designed for efficiency and ease in high-demand environments. Featuring a convenient tap to control juice flow, it allows for precise dispensing with minimal waste. Its generous 1.8-metre cable offers flexibility in placement, making it ideal for busy kitchens or juice bars. Built for performance and practicality, this juicer streamlines the juice extraction process while ensuring consistent results.

Product specifications

	215433
Length	52cm
Width	43cm
Height	95cm
Power	120W
Voltage	220V

SKU
215433



Safety Advice

- Ensure you have read and fully understood the instruction manual and safety advice before using this product.
- Do not operate the juicer if the safety cover is not properly installed. The machine is equipped with a safety switch that prevents operation unless the cover is correctly secured.
- Only connect the juicer to a 220V 50Hz power supply with a functional safety grounding system. Do not modify the electrical connections under any circumstances.
- Always inspect the power cord and plug for any signs of damage before each use. If damaged, do not use the juicer and contact a qualified technician for repair.
- Do not use the juicer in wet or damp environments. Keep the unit away from water sources to prevent electrical shock or fire.
- Before cleaning or performing maintenance, always switch off the juicer and unplug it from the power supply. Wait for all parts to stop moving before handling internal components.
- Only oranges between 40mm and 80mm in diameter should be used with this machine to avoid jamming or damage.
- Ensure all removable parts that come into contact with food are thoroughly cleaned before first use and after each use.
- Never insert fingers, utensils, or any foreign objects into the feeding port while the machine is running. Always use artificial feeding only.
- Users must not wear loose clothing, jewellery, or have long hair untied when operating the juicer to prevent entanglement with moving parts.
- Keep hands away from the internal mechanisms, including closing or rotating parts, to avoid pinching or crushing injuries.
- Wear cut-resistant gloves when handling or cleaning components with blades, such as the knife and scraper combinations.
- Only disassemble and reassemble the internal components in the correct sequence. Pay special attention to blade positioning and ensure the safety switch is engaged during reassembly.
- Do not operate the juicer if any abnormal sounds occur or if internal gears appear damaged. Cease operation immediately and arrange for part replacement to prevent further damage or injury.
- Keep the juice container and fruit peel bucket empty enough to avoid overflow. Always turn off the power before emptying either container.
- Clean the external surfaces of the main body with a damp cloth only. Do not wash the main unit with water or immerse it in liquid.



- Spilled juice or pulp should be cleaned up immediately to prevent slipping accidents. Consider using non-slip mats in the work area.
- Dispose of pulp waste in a hygienic and safe manner. Do not allow waste to accumulate within or around the machine.
- If the machine is used for extended periods, especially in noisy environments such as commercial kitchens, hearing protection is recommended to avoid prolonged noise exposure.
- Ensure all moving parts have proper clearance and are free from obstructions. Never attempt to forcefully close or operate parts that feel jammed.
- The juicer must not be used by children or by persons with reduced physical, sensory or mental capabilities unless supervised or instructed by someone responsible for their safety.
- The manufacturer assumes no liability for injury or damage caused by failure to follow these safety instructions

Monster Group UK Limited's liability will be limited to the commercial value of the product only. Please visit <https://monstershop.co.uk/policies/terms-of-service> to see the full terms and conditions.

Parts

Front Plate
1 piece(s)

Catching Tray
1 piece(s)

Peel Collecting Containers
2 piece(s)

Juicer Blade
1 piece(s)

Base Tray
1 piece(s)

Steps (11)

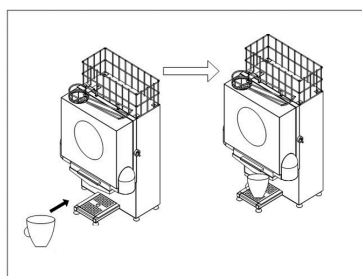


1. Before Operation

1. The power supply must have the safety grounding system, and the machine connection parts must not be changed by a non-qualified individual.
2. Check whether all parts are installed. This product is equipped with safety system, only after the machine mask is correctly installed will it work (the safety switch button must be compressed), otherwise the machine won't start.
3. Before using the product for the first time, please thoroughly clean the parts which come into contact with the food.

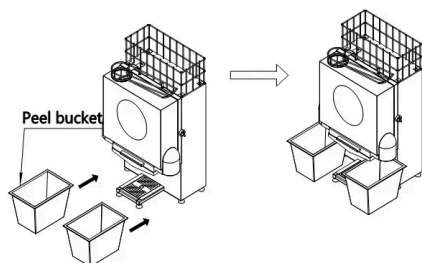
Step 2 of 11

Put your cup on the tray of the base (cup is not included).



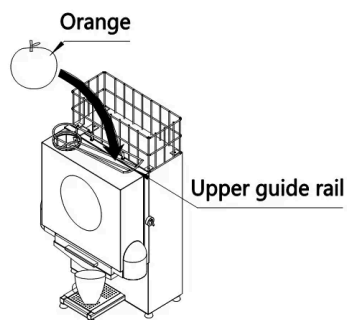
Step 3 of 11

Put the fruit peel buckets in the two sides of the bottom of the machine.



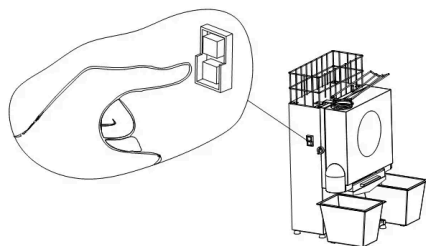
Step 4 of 11

Put a clean orange into the machine fruit basket.



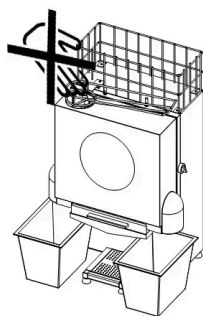
Step 5 of 11

Press the start switch so the Juicer begins to feed the oranges into the juicing mechanism. Once the juicer has completed it will release the juice at which point the fruit peel will be automatically separated into the fruit peel bucket.



Step 6 of 11

While the Juicer is in operation do not insert fingers or any other object into the feeding port. If the juice storage container or the fruit peel bucket is filled up, switch off the power supply and then clean it.



Step 7 of 11

After using the Juicer turn it off and disconnect the power supply.

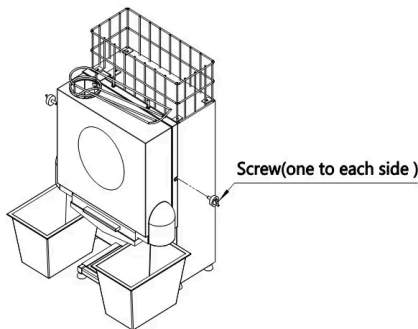


8. Maintenance and Cleaning

1. Before cleaning the product, the start switch must be turned off, disconnect the power supply, wait until the machine stops completely.
2. Clean the product immediately after using.
3. The external of the main body can be wiped with wet cloth, please do not wash it with water directly, and the individual parts can be put directly into the water to clean.

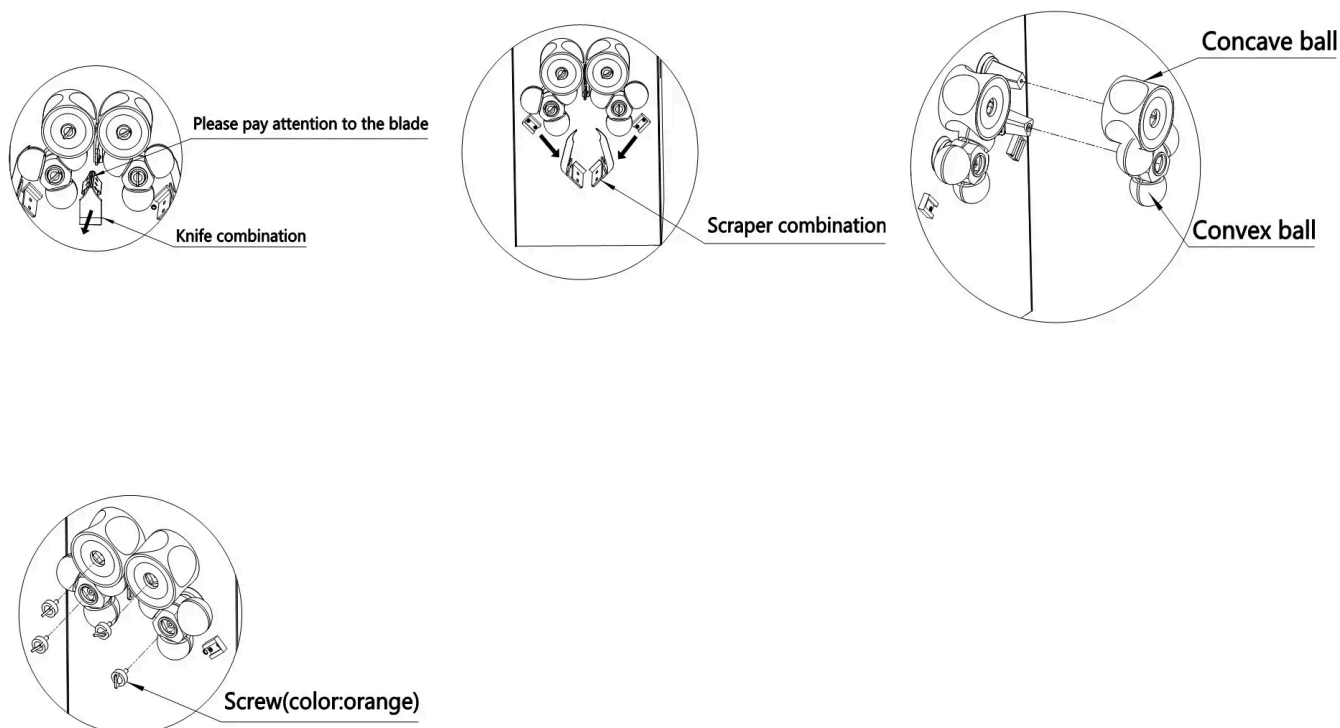
9. Disassembling to Clean

Unscrew the cover screw, take down the cover.



Step 10 of 11

In turn take down the knife combination (be careful as the blade is sharp and will cut if not cautious), two groups of scraper combinations, unscrew the four screws, take down the two groups of concave and convex balls (each group of the concave and convex balls needs to be taken out at the same time).



11. Troubleshooting

- **WHAT DO I DO IF THERE ARE MISSING PARTS FROM MY ORDER?**

If there appears to be any part missing from your order, contact our friendly and helpful Customer Support Team within 7 days of receipt.

- **FOR ALL OTHER ISSUES, PLEASE CONTACT OUR CUSTOMER SUPPORT TEAM.**

Terms of Service: <https://monstershop.co.uk/policies/terms-of-service>

