

A StepAlong by Monster Shop (UK)

## Aluminium Wood Effect Pergola With LED Lights

214324 214326 214328 214330 214332 214334  
214336 214338



### Unit Overview

The Jardi Wood Effect Aluminium Pergola combines style, durability, and functionality to transform your outdoor space into a year-round retreat. Crafted from weather-resistant, powder-coated aluminium, this low-maintenance pergola offers protection from the sun, rain, and harmful UV rays while maintaining its elegant wood-effect finish.

The manually tilting louvres allow you to seamlessly switch between open-air relaxation and a sheltered retreat, adapting to your comfort in any weather. Integrated LED lighting enhances the ambiance, letting you enjoy your outdoor space long after sunset.

Plus, a built-in drainage system discreetly channels rainwater away, keeping your furniture dry. Easy to assemble with a solid, level foundation, this pergola is designed for effortless enjoyment, whatever the season.

### Specifications

#### Dimensions

- **Outside Leg (mm)** - 3900 & 3000 (4\*3) 3000 & 3000 (3\*3)
- **Height (mm)** - 2500 (4\*3) 2500 (3\*3)
- **Inside Feet (mm)** - 3610 & 2710 (4\*3) 2730 (3\*3)
- **Inside Leg (mm)** - 3690 & 2790 (4\*3) 2790 (3\*3)
- **Inside Height (mm)** - 2350 (4\*3) 2350 (3\*3)
- **No. of Louvres** - 25 (4\*3) 19 (3\*3)



## Safety Advice

- Please read through the Safe Working Practice to ensure prevention of injury or damage to the product.
- Ensure the pergola is securely anchored to the ground using the provided fixing bolts. Follow the instructions in the installation manual to prevent any movement of the structure.
- Installation must be performed by a minimum of two individuals. Use appropriate ladders and tools to ensure safe assembly, and avoid standing on any parts of the pergola that may not support weight.
- Before installation, check that all tools and equipment are in safe working order. Avoid using damaged or makeshift tools, which could compromise stability.
- Confirm the installation site is stable and level, free from any obstacles or uneven ground that could affect the pergola's stability.
- Only install on a stable, even surface, and ensure that there are no obstructions that may cause the pergola to shift or tilt.
- Regularly inspect all bolts, screws, and fittings after installation, especially following strong winds or other severe weather conditions, to ensure they remain tight and secure.
- Avoid placing any heavy objects on the pergola frame or top, which could exceed its structural limits and compromise stability.
- Do not attempt to install or adjust the pergola during high winds or other adverse weather conditions.
- Adhere to all specified weight limits, if applicable, and do not use the pergola for purposes other than outdoor shelter.
- For LED lighting components, ensure all electrical parts are dry and undamaged before connecting to a power source. Follow the specific LED installation instructions provided by the manufacturer.
- Only use waterproof connectors and fittings supplied or recommended by the manufacturer for LED lights. If not included, consult a qualified electrician for safe installation.
- Confirm that all electrical outlets and components used with the pergola's LED lights are compliant with outdoor use standards, as well as being properly protected against moisture exposure.
- Regularly inspect LED lights and wiring for any signs of damage, wear, or corrosion, particularly after exposure to adverse weather.



- Do not use the LED lights if any wires or components appear frayed, loose, or otherwise compromised. Ensure that damaged parts are replaced by qualified personnel with manufacturer-approved parts.
- Avoid using the pergola's LED lighting during thunderstorms or severe rain, and disconnect it from the power source in such conditions if not equipped with automatic shut-off.
- Children and pets should not be left unsupervised around the pergola, particularly near any exposed or accessible electrical components.
- Ensure that any electrical installations are performed or inspected by a licensed electrician to verify compliance with safety standards and prevent electrical hazards.
- Never modify the structure or add unauthorised accessories to the pergola, especially in a way that could compromise structural or electrical safety.
- Conduct routine maintenance checks to inspect for corrosion or damage, especially at connection points, ground attachments, and LED wiring and connectors.
- Keep clear of the pergola during extreme weather, such as high winds or heavy rain, as stability and electrical components may be compromised.
- Following these safety instructions will ensure the secure use of the aluminium pergola with LED lights, reducing potential hazards and safeguarding all users from risk.

## Parts

Part A - Pergola Leg

3 Piece(s)



Part A2 - Pergola Leg with  
Lights Control

1 Piece(s)



Part B - Pergola Crossbar with  
LED Lights

1 Piece(s)



Part C - Pergola Crossbar with  
LED Lights

1 Piece(s)



Part D - Pergola Crossbar

1 Piece(s)



Part E - Pergola Crossbar

1 Piece(s)



Part F - Pergola Roof Slats

25 Piece(s)



Part G - Pergola Corner Fittings

4 Piece(s)



## Part H - Pergola Feet

4 Piece(s)



## Part I - Control Rod

1 Piece(s)



## Part K - M6x17

66 Piece(s)



## Part O - Wrench

1 Piece(s)



## Part Q - Allen Key

1 Piece(s)



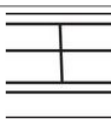
## Part S - Screw Fitting

50 Piece(s)



## Part Y1 - Solar Panel

1 Piece(s)



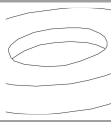
## Part Z - M4.2x16

4 Piece(s)



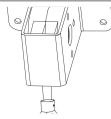
## Part Z2 - Washer

4 Piece(s)



## Part 2 - Roof Control Fitting

1 Piece(s)



## Part 4 - Connector

1 Piece(s)



## Part H2 - Pergola Feet Covers

4 Piece(s)



## Part J - M4x25

28 Piece(s)



## Part L - M6x62

16 Piece(s)



## Part P2 - Allen Key

2 Piece(s)



## Part R - Screwdriver

1 Piece(s)



## Part T - Screw Covers

24 Piece(s)



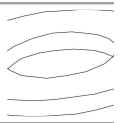
## Part Y2 - Solar Panel Cover

1 Piece(s)



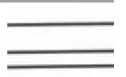
## Part Z1 - Washer

4 Piece(s)



## Part 1 - Connecting Bar

1 Piece(s)



## Part 3 - Connecting Bar Fitting

2 Piece(s)



## Part 5 - Connecting Bar Extender

1 Piece(s)



## Tools

### Ladders

2

### Tape Measure

1

### Gloves

1

### Safety Hat

1

### Spirit Level

1

### Mallet

1



Electric Drill

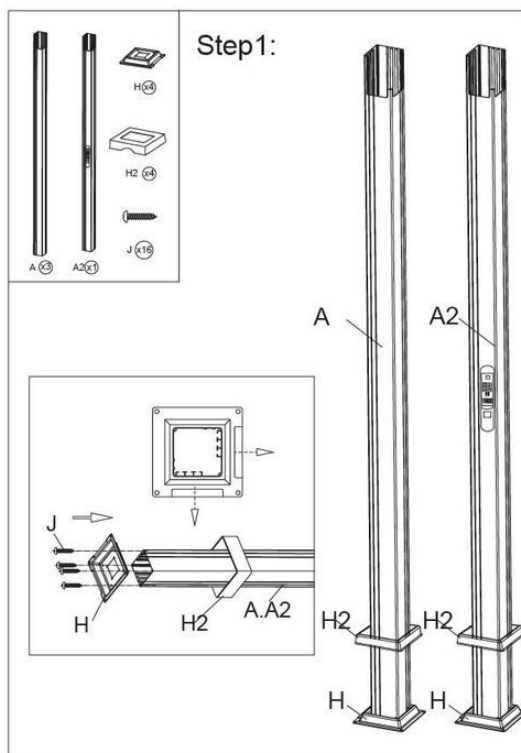
1

Knife

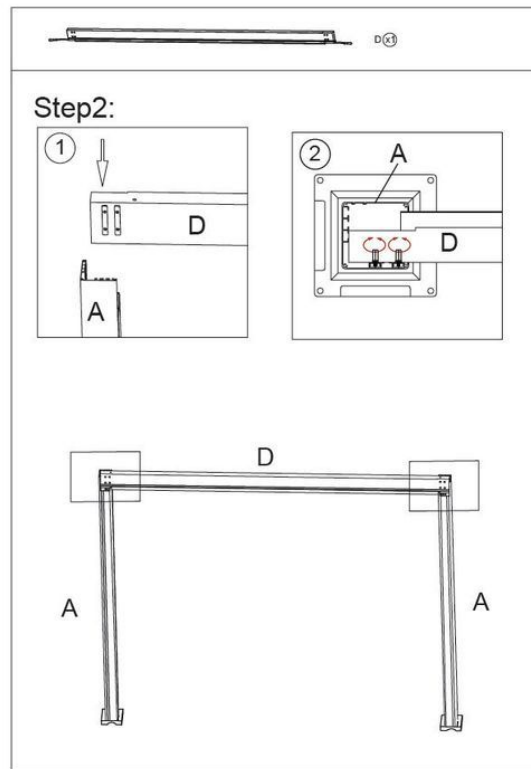
1

## Steps (16)

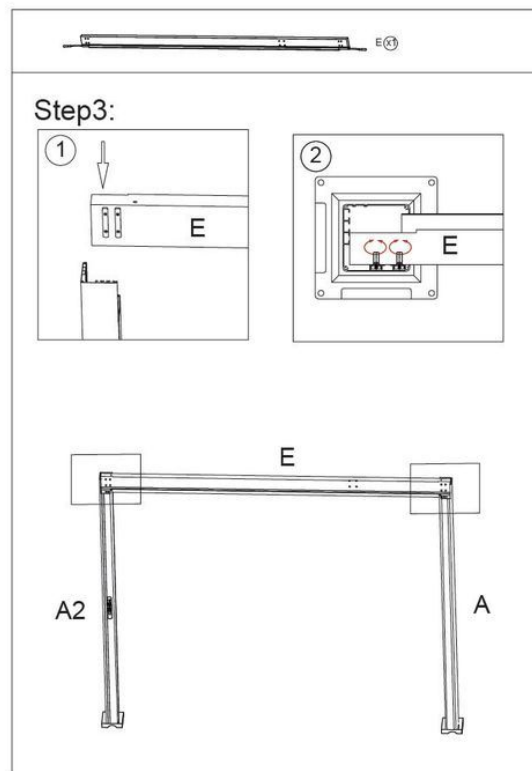
1.



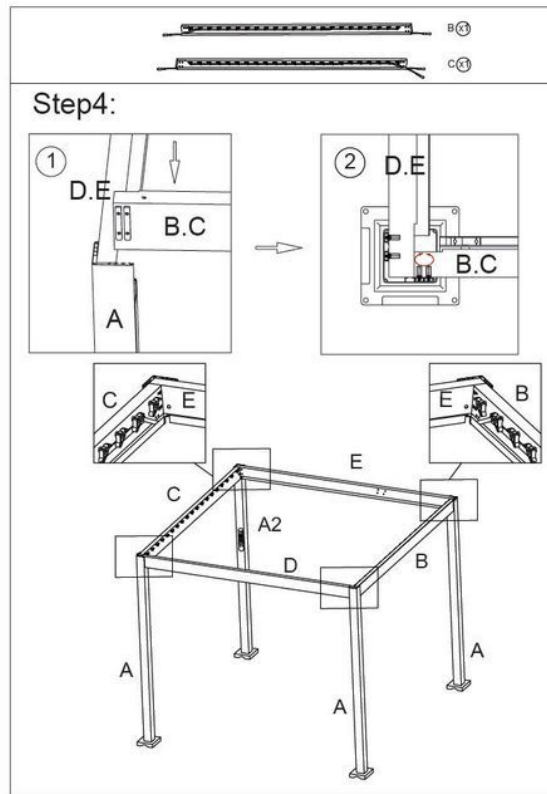
2.



3.

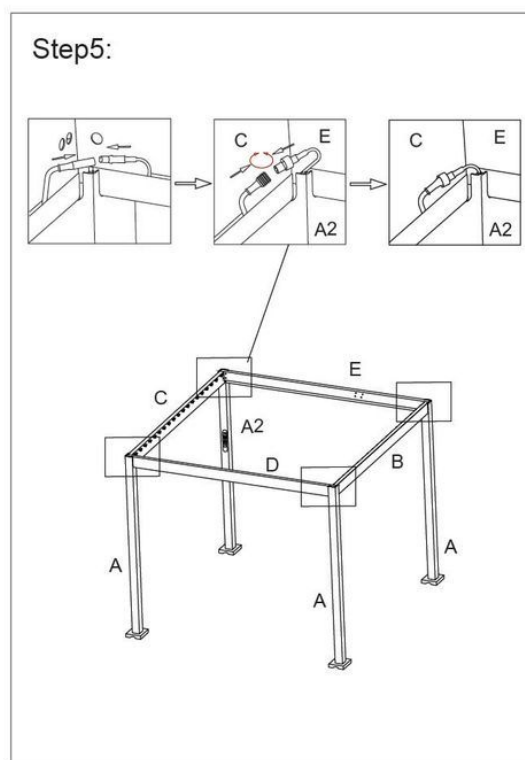


4.

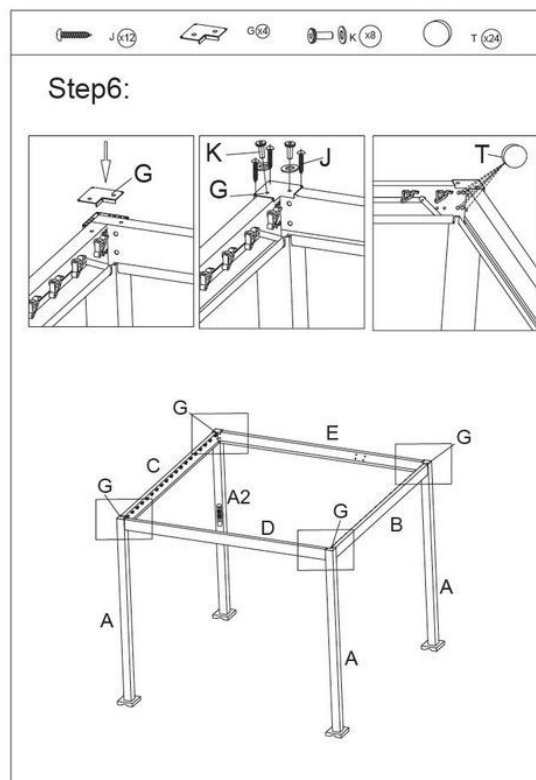




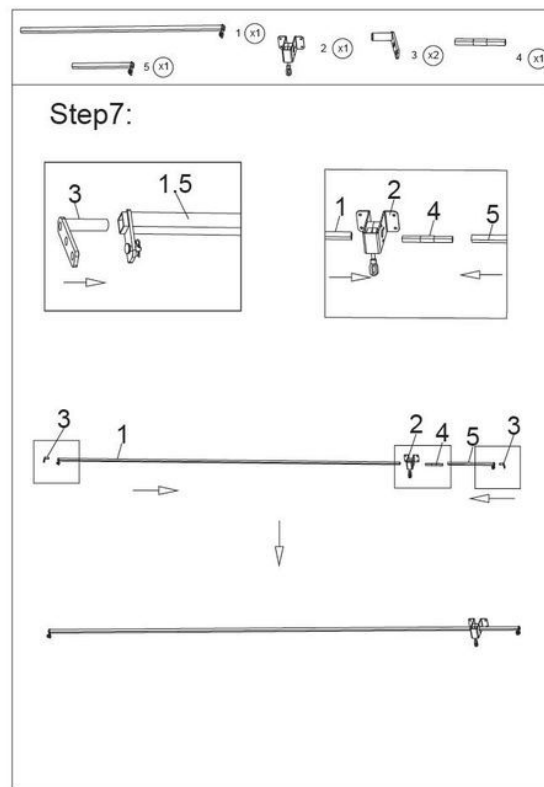
5.



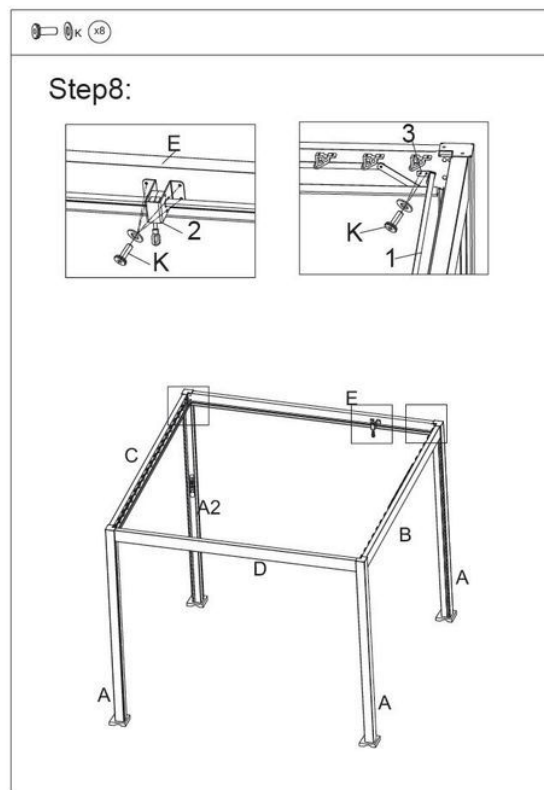
6.



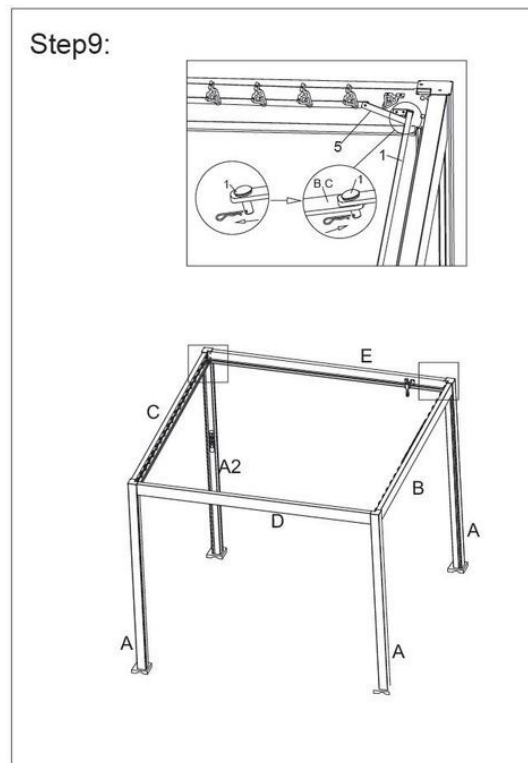
7.



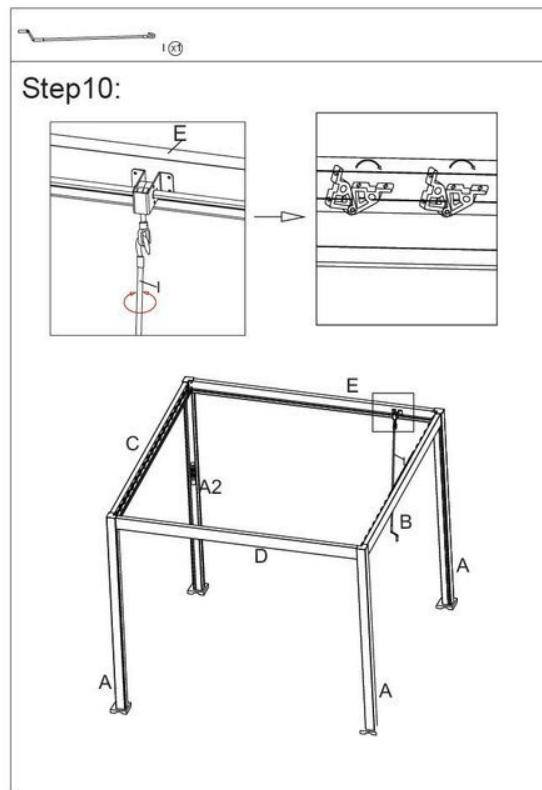
8.



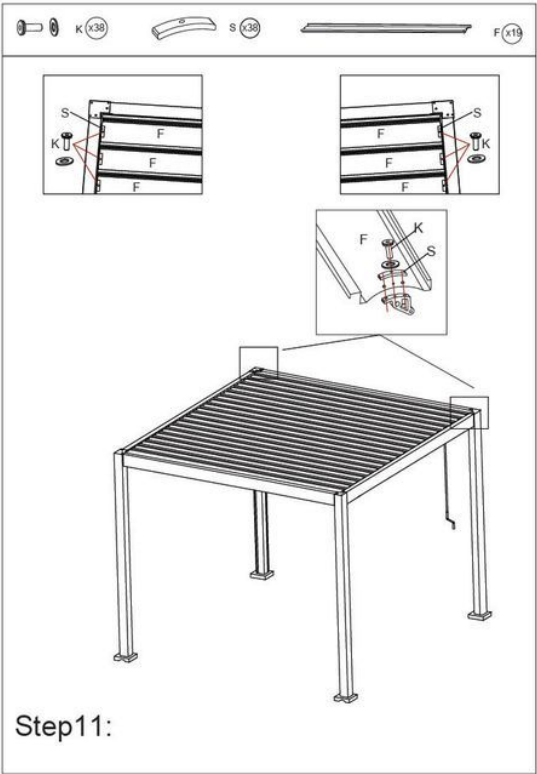
9.



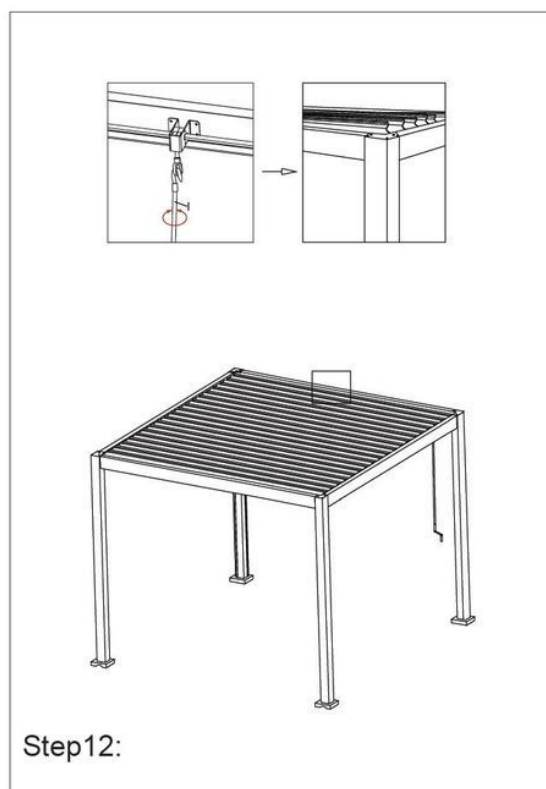
10.



11.

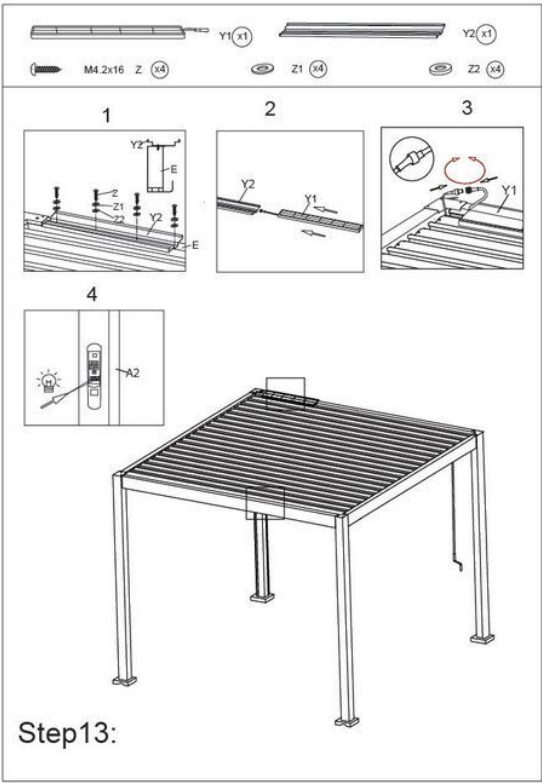


12.

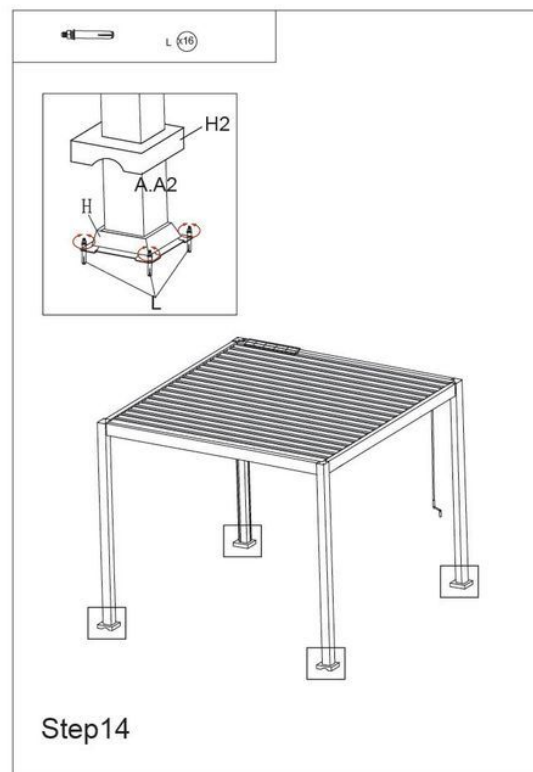




13.



14.



## 15. Maintenance

### Care and Maintenance Instructions for Aluminium Pergola

Thank you for choosing an aluminium pergola for your outdoor space. To maintain its durability and aesthetic appeal, please follow these care and maintenance instructions.

#### Regular Cleaning

To keep your aluminium pergola looking its best, clean it regularly using the following steps:

1. **Dust Removal** – Use a soft brush or cloth to remove dirt, leaves, and debris.
2. **Mild Soap Wash** – Mix warm water with a mild detergent and use a soft sponge or cloth to clean the frame.
3. **Rinse Thoroughly** – Use a hose with low pressure to rinse off any soap residue. DO NOT use a pressure washer.
4. **Drying** – Wipe down the structure with a dry, lint-free cloth/microfibre



cloth to prevent water spots.

## Periodic Maintenance

Perform a thorough inspection every 3-6 months:

- **Check for Loose Bolts and Fasteners** – Tighten any that may have loosened due to weather conditions.
- **Inspect for Corrosion or Damage** – While aluminium is resistant to rust, prolonged exposure to harsh elements may cause minor surface wear.
- **Lubricate Moving Parts** – If your pergola has adjustable louvered sections or sliding components, apply a silicone-based lubricant to ensure smooth operation.
- **Examine Drainage Systems** – Ensure gutters or drainage holes are free from blockages.

## Weather Protection

- **Storm Precautions** – If high winds or storms are forecasted, secure any loose parts and remove any hanging accessories.
- **Winter Care** – If you experience snow, periodically remove any heavy accumulation to prevent excess weight on the structure.
- **Sun Exposure** – Aluminium is UV-resistant, but prolonged exposure may cause fading. Consider applying a protective wax coating for added longevity.

## Avoid Harsh Chemicals

- Do not use abrasive cleaners, ammonia-based solutions, or strong solvents as they can damage the powder-coated finish.
- Avoid using steel wool or hard-bristle brushes to prevent scratching.

## Storage and Seasonal Considerations

- If not in use for an extended period, consider covering the pergola with a breathable, weatherproof cover.
- Store removable accessories, such as fabric canopies or curtains, in a dry and sheltered location.

## Warranty and Professional Maintenance



- Refer to the manufacturer's warranty for specific maintenance requirements and coverage.
- If structural repairs are needed, contact a professional installer or the manufacturer to avoid voiding the warranty.

By following these simple maintenance steps, your aluminium pergola will remain in excellent condition for years to come. Enjoy your outdoor space with confidence!

## 16. Troubleshooting

- **WHAT DO I DO IF THERE ARE MISSING PARTS FROM MY ORDER?**

If there appears to be any part missing from your order, contact our friendly and helpful Customer Support Team within 7 days of receipt.

- **FOR ALL OTHER ISSUES, PLEASE CONTACT OUR CUSTOMER SUPPORT TEAM.**

