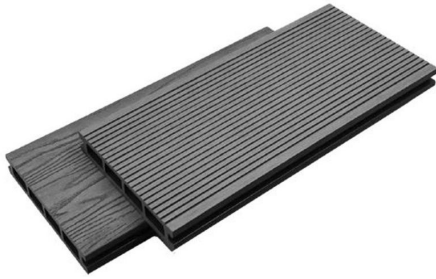


A StepAlong by Monster Shop (UK)



Composite Decking Boards 2.5m

214646 & 214648

Unit Overview

The Composite Decking Boards 2.5m provide a long-lasting, low-maintenance solution for creating beautiful outdoor spaces. Made from durable composite materials, these boards resist fading, staining, and weathering while offering the natural look of wood. Perfect for patios, gardens, or poolside areas, the 2.5m boards are easy to install and deliver a sleek, modern finish designed to enhance any outdoor setting.

Specifications

Dimensions:

- **Length** – 2.5m / 250cm / 2500mm
- **Width** – 0.145m / 14.5cm / 145mm
- **Thickness** - 0.0215m / 2.15cm / 21.5mm
- **Weight (per board)** – 5.8kg



Safety Advice

- Ensure that only trained personnel install the Composite Decking Boards. All installers must be familiar with safe handling and installation procedures specific to this product.
- Use appropriate scaffolding or ladders, and provide fall protection equipment when installing at height. Installers should be trained in safe working at height procedures, including the use of harnesses and fall prevention devices.
- Heavy lifting should be avoided where possible. Provide manual handling training to all installers, and use lifting equipment or arrange two-person lifts for heavier panels to reduce strain or injury risk.
- Maintain tools regularly to ensure they are in good working condition, especially power tools like drills and saws. Installers must be trained in the correct use of each tool, including wearing personal protective equipment (PPE) such as gloves, eye protection, and ear defenders where necessary.
- Inspect all cladding panels prior to installation for any sharp edges, splintering, or damage. Sand down any rough edges to reduce the risk of cuts, and always wear gloves when handling the panels to prevent injuries from sharp edges.
- To minimise fire risks, install cladding with proper sealing and ensure the use of fire-resistant and weather-resistant materials. Regular inspections are required to check the integrity of the installation and ensure ongoing safety.
- Follow the manufacturer's installation guidelines rigorously. This includes ensuring secure fixation of panels and regularly checking for stability after installation. Poor installation could lead to panels becoming loose and potentially falling, posing a safety risk to occupants and bystanders.
- Maintain a tidy work area at all times during installation. Avoid leaving tools or materials lying on the ground to prevent tripping hazards; store tools and materials securely when not in immediate use. Adhere to good housekeeping practices to maintain a safe workspace.

Monster Group UK Limited's liability will be limited to the commercial value of the product only.

Please visit <https://monstershop.co.uk/policies/terms-of-service> to see the full terms and conditions.

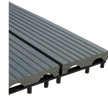
Parts



A StepAlong by Monster Shop (UK)
Composite Decking Boards 2.5m

Decking Boards

5 Piece(s)



Connectors40 Piece(s)

Screws40 Piece(s)

Steps (7)

1. Things to Note Before Assembling

- **Please Note:** Before installing the Composite Boards, ensure the concrete is at least 10cm thick, and that it is also clean and dry.
- **Please Note:** Make sure there is sufficient drainage on the site to avoid water collecting underneath the boards after installation; we recommend laying the concrete with a slight incline to ensure drainage.
- **Please Note:** Decking Boards must not be laid directly on the ground, but should be fixed to the supplied WPC joists.
- **Please Note:** We suggest to install the Composite Boards in temperatures under 25° and avoiding exposure to the hot sun to reduce the influence of thermal expansion and contraction.

2.

The WPC joists need to be fastened to the concrete base using screws through the joists and into the concrete base with plastic raw plugs. The joists should be at least 30cm apart and parallel to each other, in-line with the slope of the concrete base, this is to allow for easy drainage. When laying the joists, leave at least a 3cm gap between the end of the joist and a solid structure, such as a wall, again, to allow for easy drainage.

Please Note: The maximum distance between two joists should be 30cm. Leave at least 3cm gap between the end of the joist and a solid structure, such as a wall.



3.

Start laying your decking boards at the outside of the area to be decked. Place your first board and screw it into each joist it crosses using a row of starter clips. Then fit T-Clips into the groove along the side of the board and screw them into each supporting joists with the screws provided, one T-Clip for each supporting joist.

4.

Fit your next board by sliding it into the T-Clips used to secure this first board, then fit another set of T-Clips to secure the opposite side of the board, again, one T-Clip for each supporting joist.

Please Note: Leave a gap of at least 5mm between each board to allow for expansion due to temperature changes and for sufficient drainage.

5.

Follow a similar process to fix subsequent boards, attaching the final board in a similar manner to your first: using starter clips.

6. Maintenance

- WPC Composite Boards need to be kept away from high temperature equipment, such as heaters and grilling apparatus, as this can cause discoloration, deformation and damage. Never let kerosine, petrol or other organic solvents come into contact with your deck.
- We recommend when using a barbecue or fire pit on the decking, that there be a surface between them, and that the item is secure and does not wobble or move. Be careful when removing hot embers or ash from the decking as the decking will be hot also after coming into contact with the embers.
- We also advise not to drag furniture or plant pots across the decking,



dropping heavy items onto the deck, such as large plant pots, trees etc, items with metal feet should have suitable material between them and the decking to avoid damaging the deck.

- Do not use corrosive or strong chemicals, such as bleach, when cleaning.

If your decking becomes dirty due to mildew, mould and debris, follow these simple steps to clean and maintain the boards:

1. Use a broom to remove excess debris and leaves, a hard bristled brush is best as this will also remove any accumulations of moss, algae and smaller leaves.
 2. Mix composite board cleaner or mild detergent into a bucket of hot water.
 3. Apply the hot soapy water to the decking and use the hard-bristle brush to scrub the surface of the decking.
 4. Leave the hot soapy water on the decking for a few minutes before rinsing off with more warm water. Ensure all cleaning fluids and debris has been removed before leaving the decking to dry
- With routine cleaning, mould and mildew can be minimized, however, they are a common environmental condition. Sweeping and removing leaves often will help reduce the mould and mildew growth.
 - The above cleaning method should be used for all types of stains, such as wine, berries, oil and grease, although, not all stains will be removed.
 - A pressure washer is safe to use on the WPC Composite Boards.



7. Troubleshooting

WHAT DO I DO IF THERE ARE MISSING PARTS FROM MY ORDER?

- If there appears to be any part missing from your order, contact our friendly and helpful Customer Support Team within 7 days of receipt.

WHAT DO I DO IF THERE IS A BUILD UP OF MOULD OR MILDEW?

- Follow our step by step cleaning guide in the Maintenance section. We recommend the decking is cleaned regularly to ensure the mould or mildew does not leave any discoloration or damage.

WHAT DO I DO IF MY DECKING IS BOWING?

This could be down to a number of reasons: the joists are more than 30cm apart, there is a build up of water underneath the joists and this has weakened them, or something heavy has been dropped on the decking in between the joists.

- If the joists have been laid more than 30cm apart, then this needs to be rectified in order to make the decking safe.
- If you think there is a build up of water, drain the water fully from underneath the deck, then assess the the dipped area to see if the joist needs replacing.
- If something has been dropped, then this may have damaged the board permanently

WHAT DO I DO IF THERE IS A STAIN ON THE DECKING?

- Follow our step by step cleaning guide in the Maintenance section as soon as you spot the stain as this will help the removal. Unfortunately, not all stains can be removed.

WHAT DO I DO IF HOT EMBERS LAND ON THE DECKING?

- The quicker the hot embers can be removed from the decking, the better, as more damage can be done if the embers are left to cool on the decking. Remove the hot embers or ash safely, if the decking is visibly still hot, cool it with water. Allow the decking to cool completely before cleaning with composite board cleaner or a mild detergent and warm water. Cleaning will



only try to remove the ash or burn marks, if the decking has melted or has discoloured, then this will be permanent.

FOR ALL OTHER ISSUES, PLEASE CONTACT OUR CUSTOMER SUPPORT TEAM.

Terms of Service: <https://monstershop.co.uk/policies/terms-of-service>

